

## CHALICE GOLD - Zones of Anomalism from 2015 Rock Chip Sampling

- |  |   |  |
|--|---|--|
| <span style="color: blue;">■</span> Mafic and Ultramafic Intrusive Rocks     | <span style="color: black;">—</span> Shear Zone                         | <span style="color: orange;">●</span> Gold (Au)    |
| <span style="color: red;">■</span> Porphyry                                  | <span style="border: 1px dashed black;">□</span> Lakes                  | <span style="color: purple;">●</span> Arsenic (As) |
| <span style="color: pink;">■</span> Felsic Intrusive Rocks                   | <span style="border: 2px solid red;">□</span> Outline of Cameron Claims | <span style="color: teal;">●</span> Antimony (Sb)  |
| <span style="color: lightgreen;">■</span> Intermediate Felsic Volcanic Rocks | <span style="color: grey;">●</span> Rock Chip Coverage                  | <span style="color: blue;">●</span> Tungsten (W)   |
| <span style="color: green;">■</span> Mafic Volcanic Rocks                    |   |  |

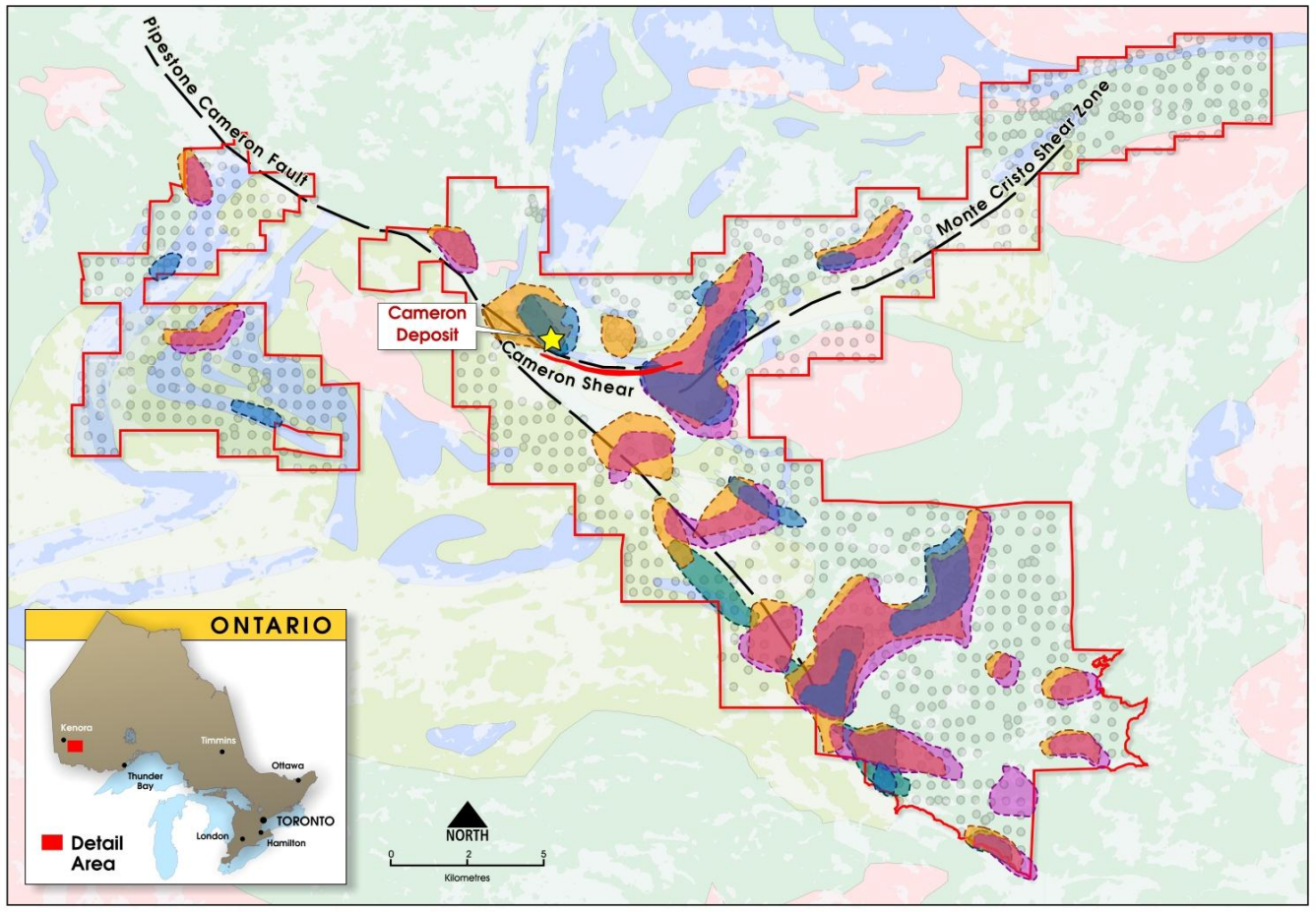


Figure 2: Areas of anomalous gold, arsenic, tungsten and antimony