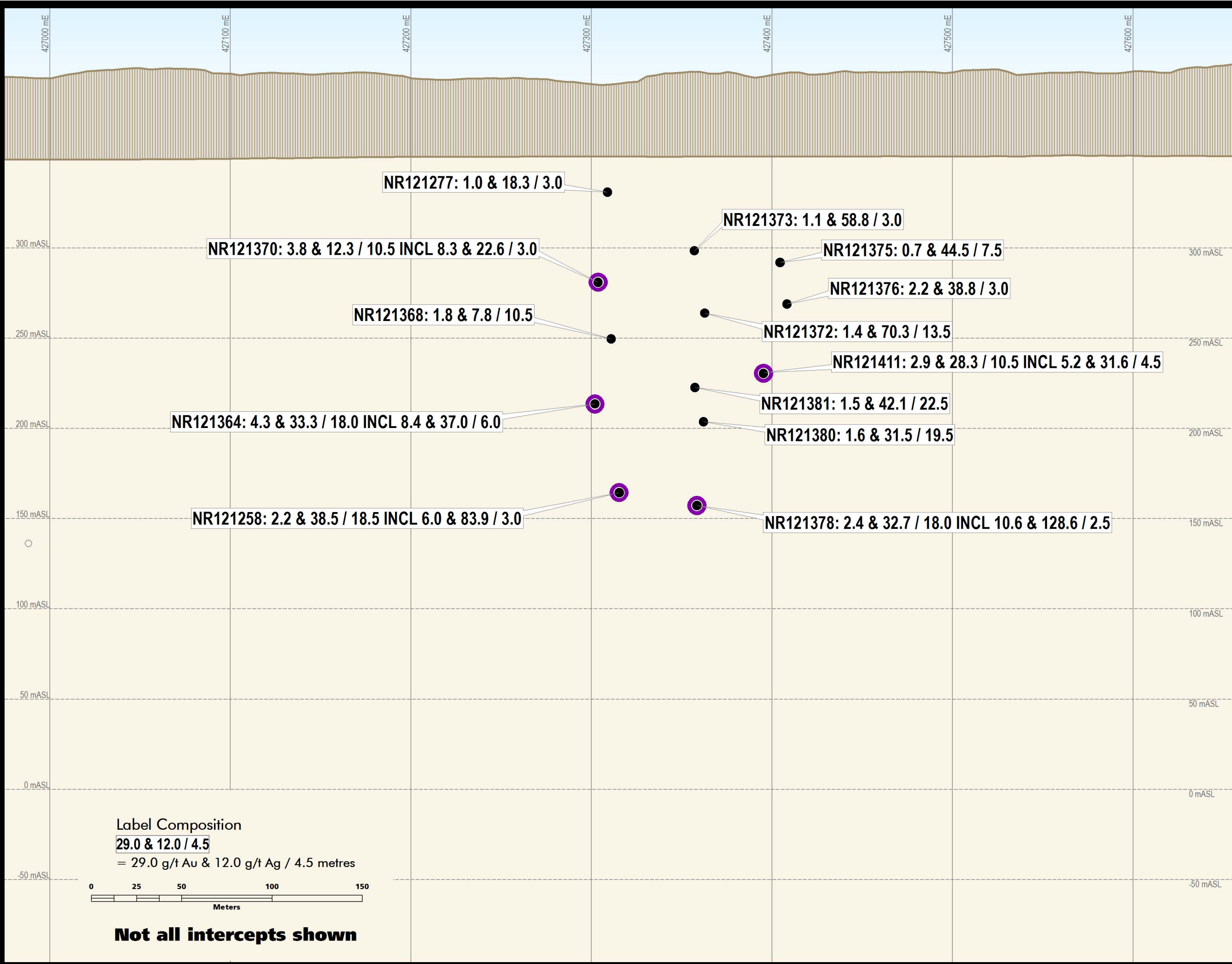


MAP 5: VERTICAL LONGITUDINAL SECTION

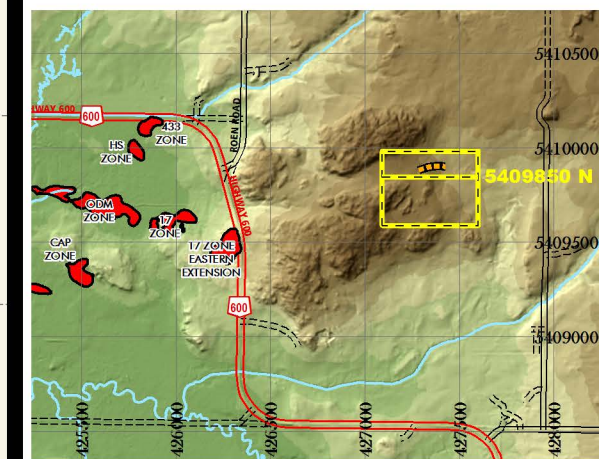
5409850 N, INTREPID Zone

October 22, 2012



- Newly Released Drillhole
- High Grade Intersection (INCL)
- Historical Drillhole Pierce Points (Graduated by Gold (g/t))*
 - 10 - 1500
 - 6 - 10
 - 3 - 6
 - 2 - 3
 - < 2
- ▨ Surface (LiDAR Survey)

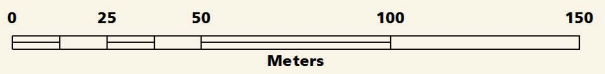
High grade values have been capped based upon resource domains.



Copyright © Rainy River Resources Ltd. 2012



Label Composition
29.0 & 12.0 / 4.5
 = 29.0 g/t Au & 12.0 g/t Ag / 4.5 metres



Not all intercepts shown