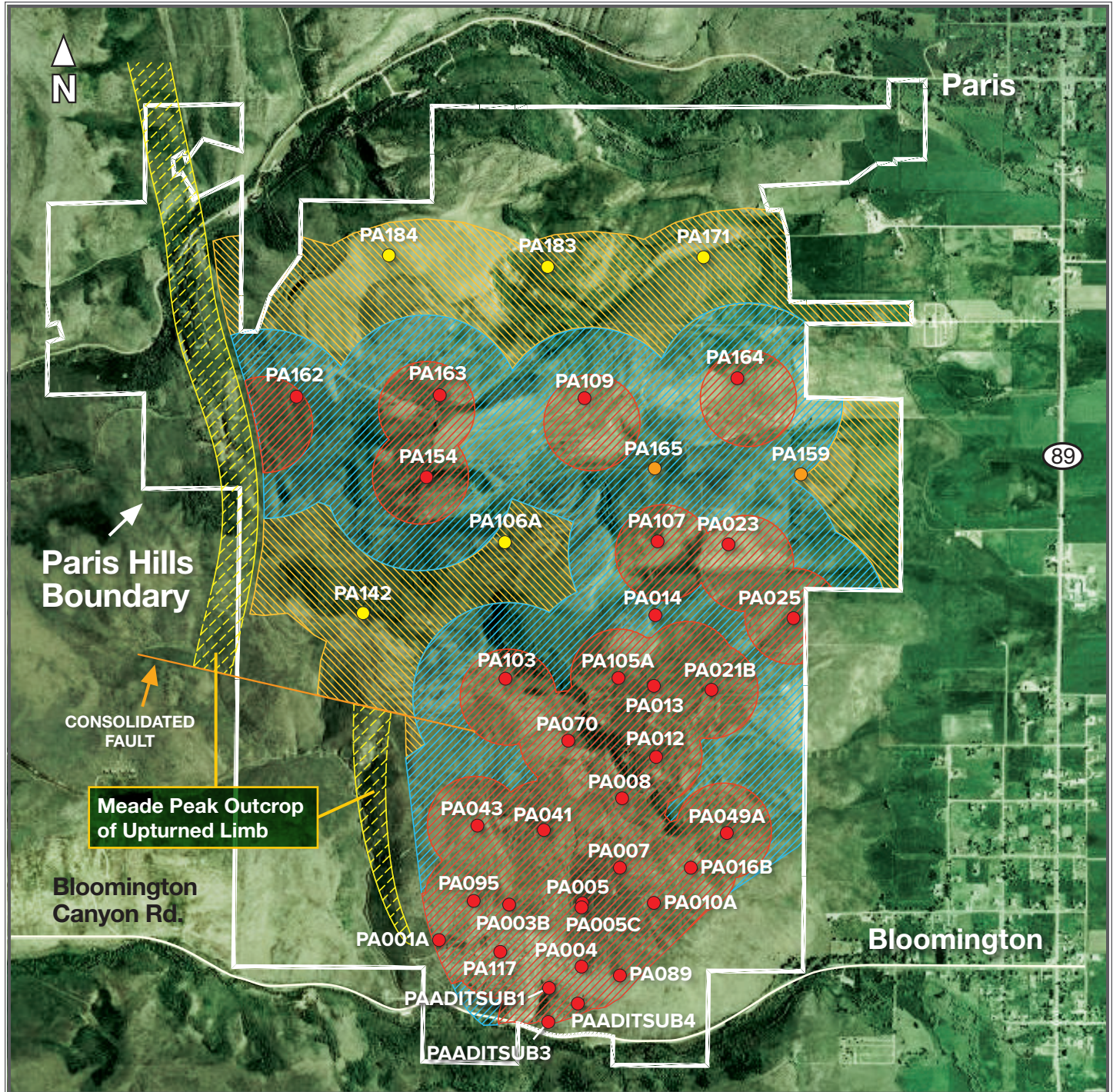


Paris Hills Lower Phosphate Zone Drill Hole Status Map

June 15, 2012



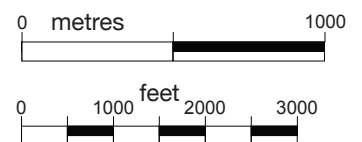
HOLE STATUS:

- Included in Measured and Indicated Mineral Resource Estimates Announced March 26, 2012
- Newly Reported Assay Results
- Assays Pending

Note: Drill holes are shown at surface locations. Center of resource circles are shown based on the drill hole Lower Phosphate Zone intercept. Any difference between collar location and Lower Phosphate Zone intercept is due to downhole drill hole deviation.

Mineral Resource Classification Areas as of March 26, 2012

- Measured Resource
- Indicated Resource
- Inferred Resource



UTM NAD83 Zone 12