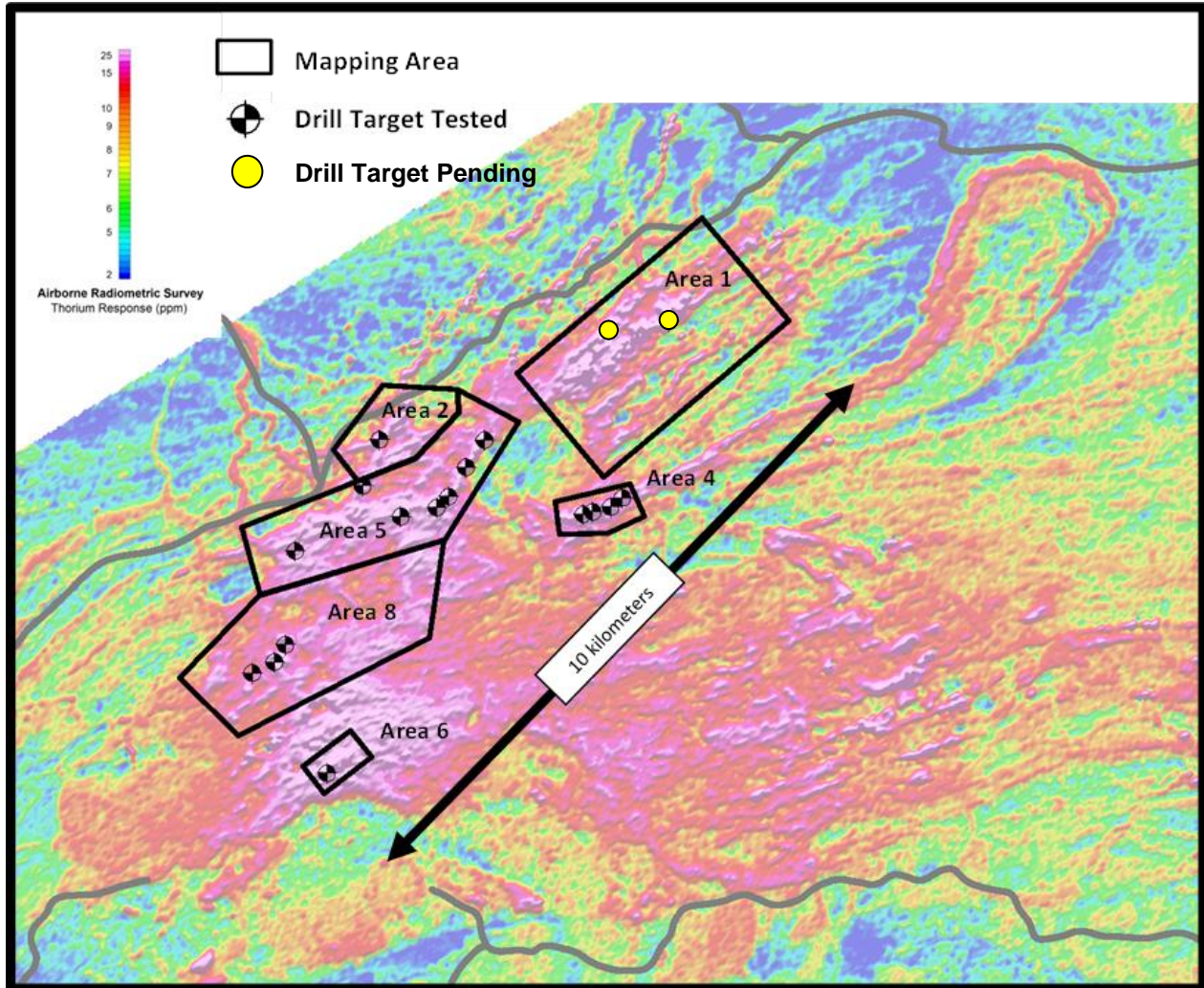


Namibia Rare Earths Inc.

Press Release of March 30, 2012 – Figure 1



Phase I Drill Targets in the Lofdal Carbonatite Complex

Airborne radiometric image showing 200 km² extent of the Lofdal Carbonatite Complex, priority drill targets tested in 2011 and the location of Area 4.



NAMIBIA RARE EARTHS INC.

Press Release of March 30, 2012 – Table 1

Complete Listing of All Analytical Results from Significant Drill Intercepts Area 4

HoleID	Section		From m	To m	Length m	La2O3 ppm	Ce2O3 ppm	Pr2O3 ppm	Nd2O3 ppm	Sm2O3 ppm	LREO %	Eu2O3 ppm	Gd2O3 ppm	Tb2O3 ppm	Dy2O3 ppm	Ho2O3 ppm	Er2O3 ppm	Tm2O3 ppm	Yb2O3 ppm	Lu2O3 ppm	Y2O3 ppm	HREO %	TREO %	HREO:TREO Ratio as %	Zone
NLOFDH4047	538E	<i>incl. and incl.</i>	29.00	44.00	15.00	116	216	24	93	68	0.05	50	258	71	515	107	317	48	287	42	3,636	0.53	0.58	91.2	Main Zone
			36.00	38.00	2.00	69	143	18	80	89	0.04	66	324	94	747	171	542	84	515	78	7,166	0.98	1.02	96.1	
			40.00	41.00	1.00	46	89	12	70	393	0.06	394	2,202	618	4,305	854	2,389	348	1,914	259	26,116	3.94	4.00	98.5	
			73.00	80.20	7.20	424	787	84	293	58	0.16	15	47	6	35	6	17	2	14	2	188	0.03	0.20	16.8	
NLOFDH4048	538E	<i>incl.</i>	5.00	15.74	10.74	45	86	10	41	25	0.02	14	67	16	114	24	66	10	61	9	749	0.11	0.13	84.5	Main Zone
			50.59	63.00	12.41	286	499	57	195	66	0.11	29	150	38	268	59	166	24	151	22	1,759	0.27	0.38	70.7	
			61.54	63.00	1.46	224	354	41	142	90	0.09	52	275	76	585	137	409	63	402	59	4,406	0.65	0.73	88.4	
			77.30	91.00	13.70	93	202	25	108	47	0.05	19	79	16	104	21	59	8	48	7	663	0.10	0.15	68.4	
			93.00	96.00	3.00	303	505	51	180	47	0.11	16	66	12	75	15	40	6	33	5	456	0.07	0.18	40.0	
NLOFDH4049	538E	<i>incl.</i>	106.00	109.00	3.00	725	1,388	146	543	158	0.30	50	170	23	113	19	47	6	34	5	500	0.10	0.39	24.6	Main Zone
			32.00	38.00	6.00	45	94	11	47	35	0.02	20	90	22	138	29	78	12	74	11	847	0.13	0.16	85.1	
			32.00	38.00	6.00	45	94	11	47	35	0.02	20	90	22	138	29	78	12	74	11	847	0.13	0.16	85.1	
NLOFDH4050	588E	<i>incl.</i>	72.00	91.30	19.30	226	428	45	161	48	0.09	17	71	15	100	21	59	9	54	8	637	0.10	0.19	52.2	Main Zone
			24.00	33.41	9.41	88	170	20	83	45	0.04	25	139	41	342	81	273	46	299	46	2,649	0.39	0.43	90.7	
NLOFDH4050B	588E	<i>incl.</i>	28.00	29.00	1.00	29	56	7	35	59	0.02	56	391	132	1,223	297	1,007	167	1,041	156	9,806	1.43	1.45	98.7	Main Zone
			24.00	39.00	15.00	141	250	27	103	40	0.06	17	80	21	161	36	118	19	124	18	1,219	0.18	0.24	76.4	
NLOFDH4051	588E	<i>incl. and incl.</i>	32.00	34.00	2.00	278	465	50	186	82	0.11	39	197	57	462	108	357	58	365	53	3,680	0.54	0.64	83.5	Main Zone
			54.13	67.00	12.87	882	1,671	180	656	124	0.35	32	104	15	82	15	42	6	36	5	452	0.08	0.43	18.3	
			61.00	64.76	3.76	2,350	4,578	497	1,808	326	0.96	83	259	35	192	35	97	14	82	12	1,071	0.19	1.14	16.4	
NLOFDH4052	588E	<i>incl. and incl.</i>	38.00	58.00	20.00	253	458	48	176	54	0.10	23	116	29	216	49	151	23	145	22	1,573	0.23	0.33	70.4	Main Zone
			43.00	44.00	1.00	541	889	86	296	122	0.19	91	591	184	1,515	359	1,089	160	916	128	12,956	1.80	1.99	90.3	
			49.52	51.00	1.48	281	524	58	220	91	0.12	47	259	77	610	147	492	85	559	87	4,453	0.68	0.80	85.3	
			102.00	104.50	2.50	765	1,234	123	411	95	0.26	30	110	17	84	15	41	6	38	6	421	0.08	0.34	22.6	
			55.00	82.00	28.00	300	550	54	185	55	0.11	28	145	41	314	73	210	32	195	29	2,219	0.33	0.44	74.2	
NLOFDH4052	588E	<i>incl. and incl.</i>	64.00	71.00	7.00	261	465	47	179	97	0.10	69	412	125	995	233	671	101	624	92	6,978	1.03	1.14	90.6	Main Zone
			113.46	132.00	9.54	453	884	97	359	97	0.19	32	112	19	104	19	47	6	36	5	528	0.09	0.28	32.3	
			128.00	129.00	1.00	1,431	2,389	243	848	302	0.52	115	443	82	437	76	170	21	105	13	2,029	0.35	0.87	40.1	
			130.00	132.00	1.00	1,160	2,342	263	983	239	0.50	69	220	31	155	29	74	10	60	9	740	0.14	0.64	21.9	
NLOFDH4052	588E	<i>incl.</i>	148.00	152.00	4.00	177	362	42	179	149	0.09	66	294	71	473	105	287	39	204	27	3,223	0.48	0.57	84.1	Main Zone
			149.00	151.56	2.56	192	398	47	211	206	0.11	93	424	104	707	159	432	58	306	41	4,865	0.72	0.82	87.6	

NAMIBIA RARE EARTHS INC.

Press Release of March 30, 2012 – Table 1 (continued)

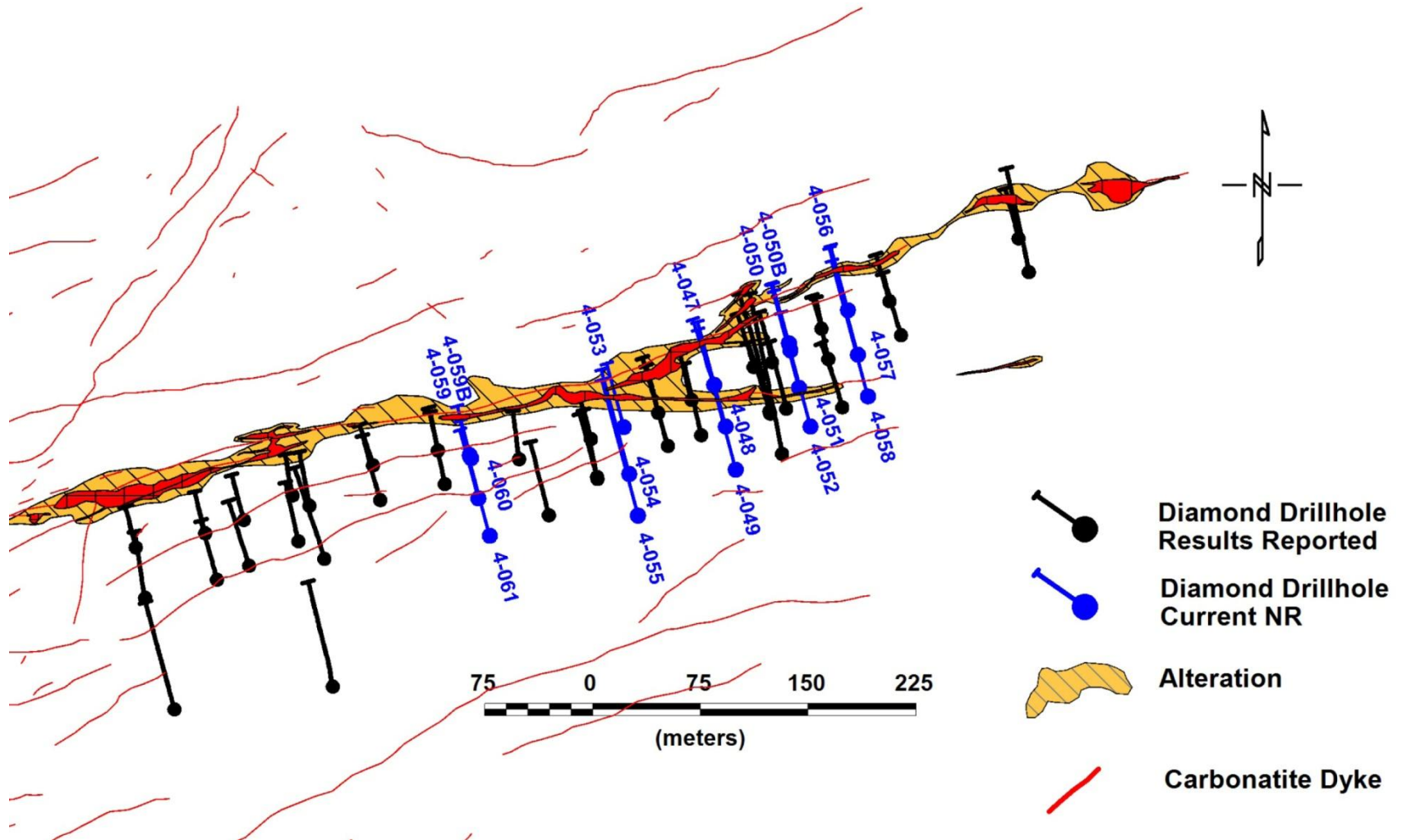
Complete Listing of All Analytical Results from Significant Drill Intercepts Area 4

HoleID	Section		From m	To m	Length m	La2O3 ppm	Ce2O3 ppm	Pr2O3 ppm	Nd2O3 ppm	Sm2O3 ppm	LREO %	Eu2O3 ppm	Gd2O3 ppm	Tb2O3 ppm	Dy2O3 ppm	Ho2O3 ppm	Er2O3 ppm	Tm2O3 ppm	Yb2O3 ppm	Lu2O3 ppm	Y2O3 ppm	HREO %	TREO %	HREO:TREO Ratio as %	Zone
NLOFDH4053	475E		15.00	21.00	6.00	112	203	21	75	35	0.04	18	82	20	132	29	82	12	78	12	837	0.13	0.18	74.4	Main Zone
			34.00	41.00	7.00	183	321	32	105	30	0.07	13	68	17	122	27	78	11	69	10	881	0.13	0.20	65.9	
			44.00	51.00	7.00	379	604	58	190	43	0.13	13	47	7	45	9	26	4	21	3	334	0.05	0.18	29.0	
NLOFDH4054	475E		34.00	49.00	15.00	80	147	16	59	33	0.03	18	78	17	119	26	75	12	72	11	762	0.12	0.15	77.7	Main Zone
		<i>incl.</i>	58.00	65.00	7.00	515	869	90	317	72	0.19	20	82	15	101	21	60	9	50	7	678	0.10	0.29	35.8	
NLOFDH4055	475E		63.00	64.00	1.00	2,721	4,719	493	1,737	363	1.00	93	344	51	307	57	154	20	109	15	1,831	0.30	1.30	22.9	Main Zone
		<i>incl.</i>	59.00	62.00	3.00	62	121	14	54	37	0.03	18	71	14	92	18	54	8	54	8	541	0.09	0.12	74.3	
			69.00	88.00	19.00	126	227	23	89	43	0.05	23	96	22	149	30	84	12	73	10	937	0.14	0.19	73.7	
NLOFDH4056	638E		83.00	84.00	1.00	148	313	36	155	122	0.08	71	319	80	550	112	310	43	236	32	3,473	0.52	0.60	87.1	Main Zone
		<i>incl.</i>	105.00	111.00	6.00	88	213	29	124	51	0.05	16	62	11	63	13	34	5	29	4	397	0.06	0.11	54.4	
			15.00	25.00	10.00	257	456	49	166	45	0.10	18	90	23	156	37	112	19	118	18	1,160	0.18	0.27	64.3	
NLOFDH4057	638E		16.00	17.00	1.00	116	204	25	100	64	0.05	46	285	94	719	181	572	97	632	100	5,494	0.82	0.87	94.2	Main Zone
		<i>incl.</i>	34.00	39.00	5.00	189	348	37	139	52	0.08	25	118	28	211	48	139	22	152	23	1,342	0.21	0.29	72.4	
			44.00	51.00	7.00	356	671	67	227	48	0.14	12	57	10	59	12	35	5	34	5	365	0.06	0.20	30.7	
NLOFDH4058	638E		46.00	47.00	1.00	1,141	2,260	232	770	143	0.45	31	143	19	97	18	48	6	39	5	527	0.09	0.55	17.0	Main Zone
		<i>incl.</i>	99.00	103.00	4.00	691	1,366	148	537	144	0.29	43	159	24	118	21	53	7	43	6	540	0.10	0.39	26.0	
			52.20	71.00	18.80	269	476	48	165	44	0.10	17	86	23	179	41	125	19	125	19	1,364	0.20	0.30	66.9	
NLOFDH4059	363E		67.00	68.00	1.00	170	320	35	140	100	0.08	84	615	206	1,837	429	1,337	208	1,355	200	15,215	2.15	2.22	96.6	Main Zone
		<i>incl.</i>	15.00	36.00	21.00	83	156	17	66	40	0.04	23	113	31	227	52	157	24	148	21	1,662	0.25	0.28	87.2	
			27.00	29.00	2.00	58	107	12	51	75	0.03	56	297	90	692	167	521	79	486	70	5,818	0.83	0.86	96.5	
NLOFDH4059B	363E		16.75	36.00	19.25	128	236	25	89	44	0.05	24	115	30	222	51	149	23	137	19	1,717	0.25	0.30	82.7	Main Zone
		<i>incl.</i>	34.00	36.00	2.00	47	92	11	44	64	0.03	54	318	93	707	165	477	72	424	59	6,200	0.86	0.88	97.1	
NLOFDH4060	363E		20.00	25.00	5.00	124	227	27	96	32	0.05	13	55	12	81	19	55	8	48	7	621	0.09	0.14	64.5	Main Zone
			43.00	63.00	20.00	111	190	21	75	35	0.04	19	88	23	169	38	113	17	104	15	1,264	0.18	0.23	81.1	
NLOFDH4061	363E		65.00	77.00	12.00	494	769	73	255	92	0.17	41	186	43	314	72	221	34	205	30	2,517	0.37	0.53	68.5	Main Zone
		<i>incl.</i>	68.00	71.00	3.00	284	481	50	186	110	0.11	65	350	93	713	166	510	78	469	68	5,880	0.84	0.95	88.3	

NAMIBIA RARE EARTHS INC.

Press Release of March 30, 2012 – Figure 2

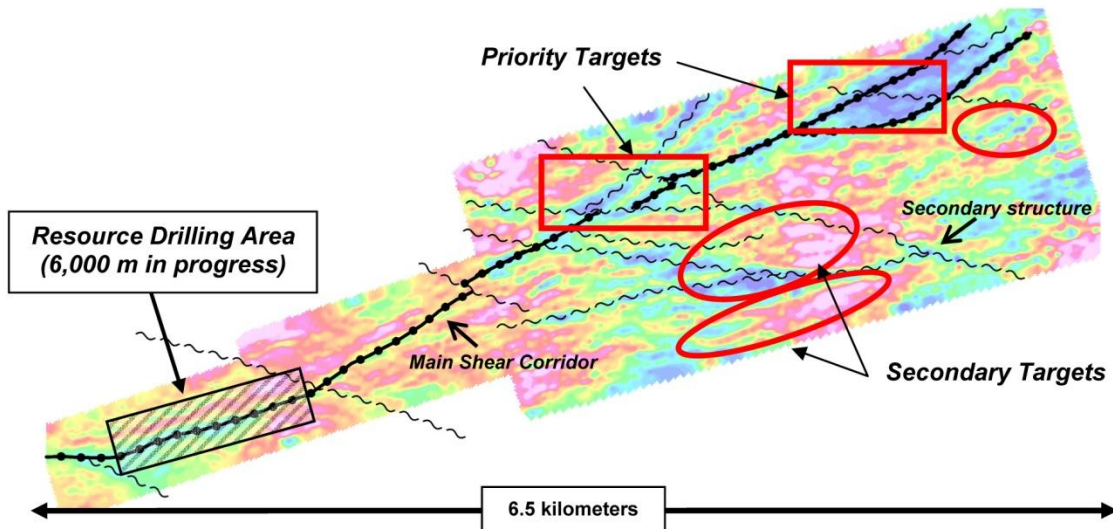
Diamond Drill Plan and Progress in Area 4



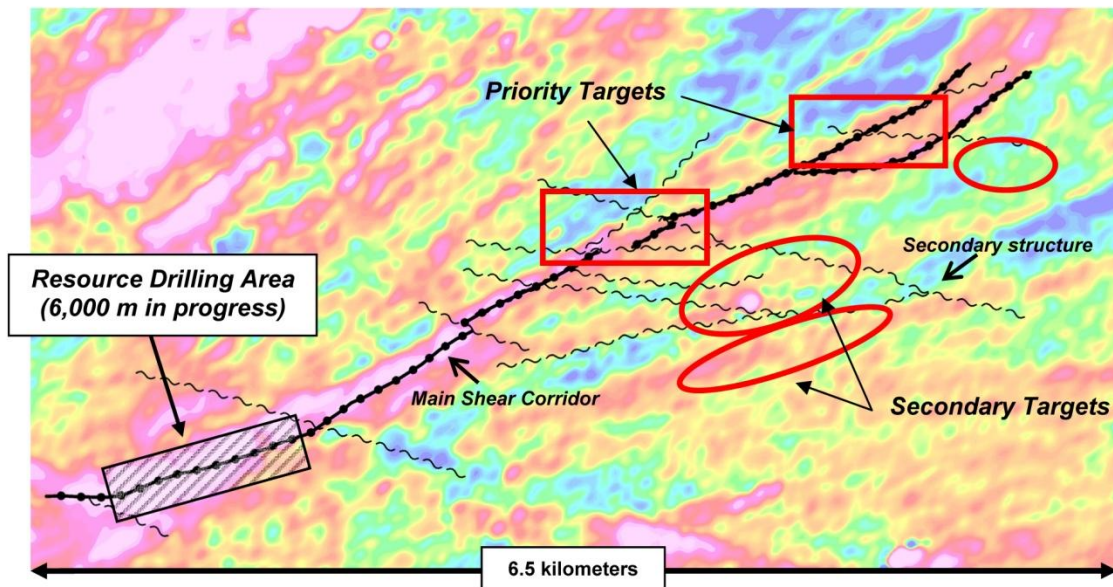
NAMIBIA RARE EARTHS INC.

Press Release of March 30, 2012 – Figure 3

Area 4 Resource Drilling Area, Gradient IP Coverage and New Target Areas



Gradient IP coverage (resistivity) over Area 4 with interpreted trace of main shear corridor and secondary structures. Resource area in southwest with new target areas to northeast in red boxes (high priority) and ovals (second priority). Note coincidence of main shear corridor with resistivity lows (blue).



Airborne radiometric coverage (thorium) with interpreted trace of main shear corridor and secondary structures. Resource area in southwest with new target areas to northeast in red boxes (high priority) and ovals (second priority). Note coincidence of main shear zone interpretation with radiometric trend.