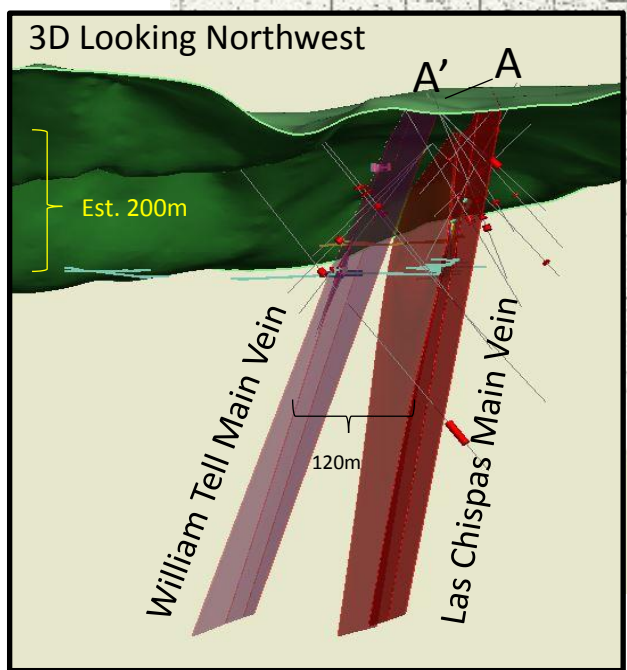
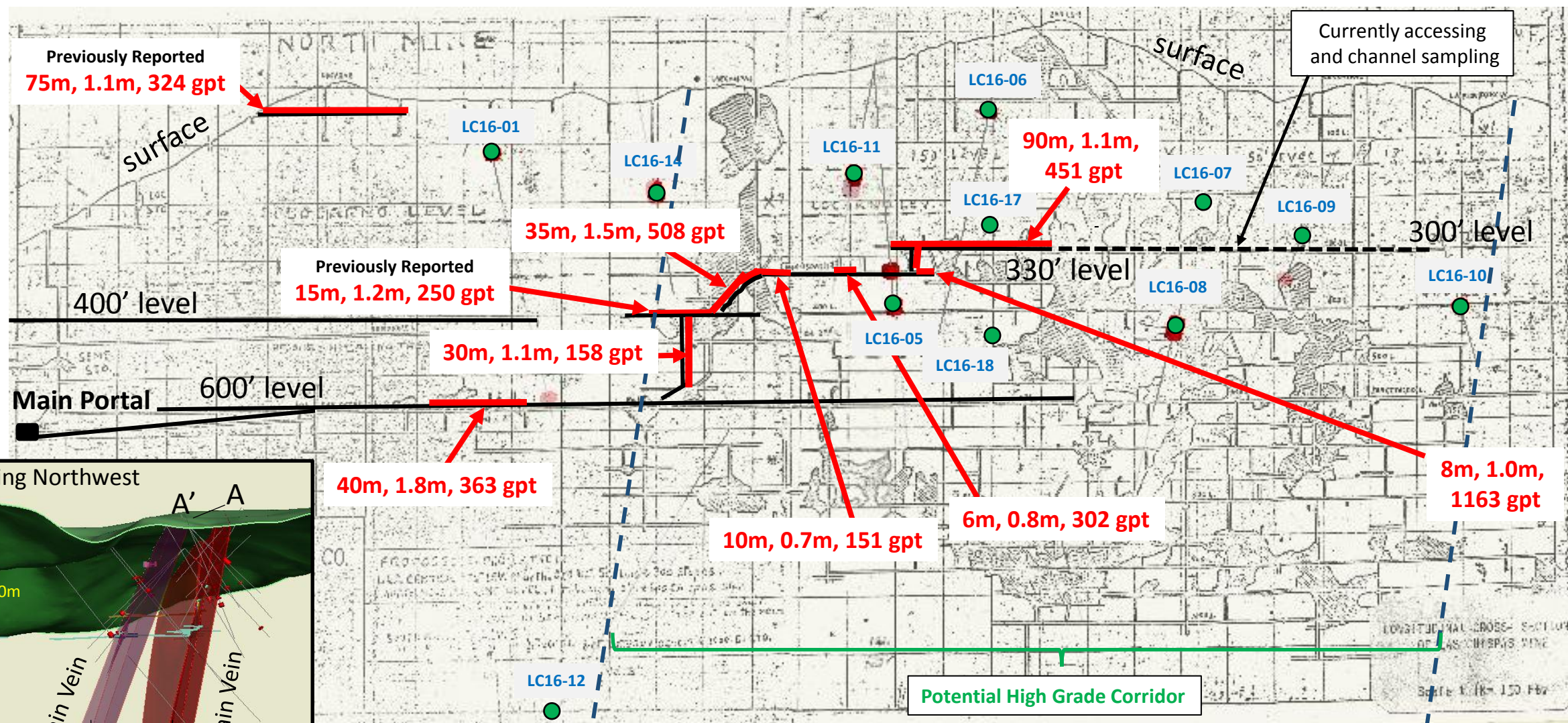


Las Chispas Main Vein Long Section with Historic Workings & Recent Exploration (Looking East)

A

A'




35m, 1.5m, 508 gpt	U/G Channel Sample; Strike Length (m), Width (m), W.Ave. AgEq. gpt*
—	Accessible (July 15, 2016)
—	> 150 gpt AgEq* (July 15, 2016)
Hole ID	
●	Core hole number and vein pierce point (est.)

*75 (Ag):1 (Au) ratio for AgEq

LC16-15

SILVERCREST
Metals Inc.

0m 100m



Breccia on Las Chispas 400' level;
Average 1.9 metres @ 2.34 gpt Au, 343.5 gpt Ag,
or 519.2 gpt AgEq*